



APPLIED MEASUREMENTS LTD.
Transducer Specialists...

+44 (0) 118 981 7339

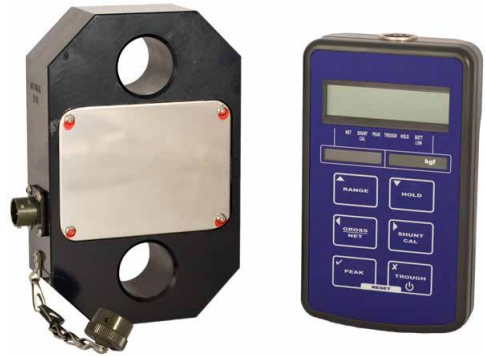
info@appmeas.co.uk

<https://appmeas.co.uk>

ETW Wired Lift Link Tension Load Cell System

Key Features:

- Capacities 1 tonne to 100 tonnes
- Designed for use with Standard Lifting Shackles
- Sealed to IP65
- Robust Construction
- Low Weight Compared to Other Manufacturers Models
- Supplied with Rugged Carry Case and 15metre Connecting Cable
- 3 Year Warranty



For the measurement of cable tension, under-hook crane weighing and lifting gear applications.

The ET wired lift link load cells are designed to be used as a load monitoring link for cable tension measurement, under-hook crane weighing and lifting gear weighing applications. The ET load cell is sealed to IP65 protection rating giving it excellent waterproofing properties when using outside.

The ET wired lift link load cell is supplied as a calibrated system in the required engineering units and comes with a TR150 handheld digital indicator plus 15 metres of connecting cable, in a rugged carry case. 1 or 2 channel versions are available which enables the system to be read in different engineering units (readout in tonnes only is standard). For applications where it is not possible to run the cable between the load cell and the indicator we offer the [ET24 telemetry wireless version](#).

Options:

- Bow or D Type Shackles
- Wireless Telemetry Version
- Higher Capacity Versions
- 1 or 2 Channel Versions Available
- USB Version (via DSC-USB)
- TEDS (Transducer Electronic Data Sheet)
- TEDS Allows Plug & Play with TEDS enabled Instrumentation.
- Single or Multi-Channel PC-Based Monitoring & Data Logging System.

Applications:

- Lifting Gear Weighing
- Cable Tension Measurement
- Under-Hook Crane Weighing
- In-Line Force or Load Measurement
- Boat Weighing
- Car Weighing
- Lifting Gear Weighing
- In-line Weighing Applications
- Crane Monitoring



APPLIED MEASUREMENTS LTD.

Transducer Specialists...

+44 (0) 118 981 7339

info@appmeas.co.uk



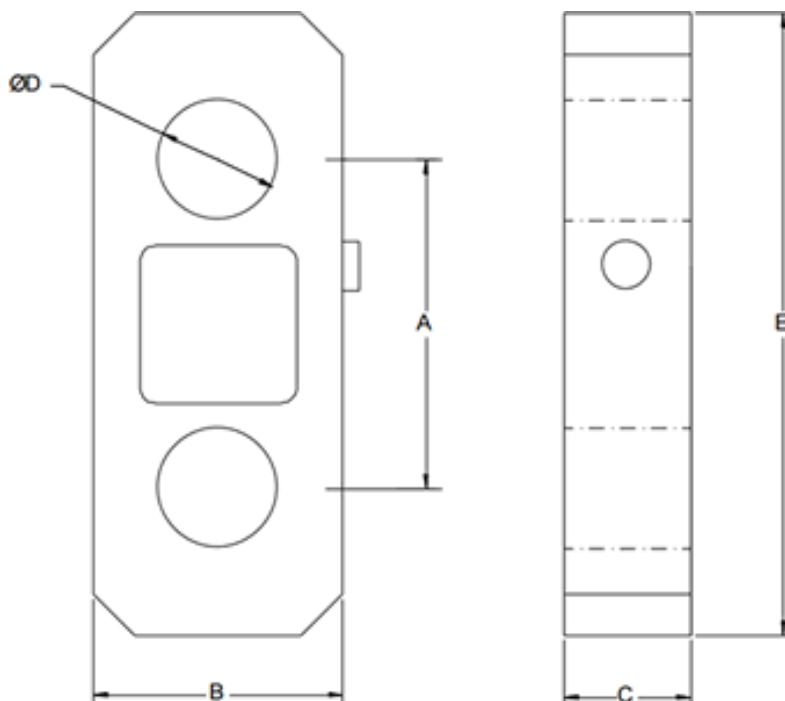
<https://appmeas.co.uk>

Specification:

| | | |
|--|---------------------|---|
| Range | tonnes | 0-1, 0-2, 0-5, 0-12, 0-25, 0-50, 0-100* |
| Operating Modes | Tension Only | |
| Accuracy | ±%/Rated Capacity | <±0.25% (<±0.3% above 100te) |
| Operating Temperature Range | °C | -10 to +50 |
| Safe Overload | % of Rated Capacity | 150 |
| Ultimate Overload | % of Rated Capacity | 500 |
| Safety Factor | | 5:1 |
| IP Rating (Environmental Protection) | | IP65 |
| Construction Material | | Anodised Aluminium Alloy |
| Connections | | Locking Connector + 15m Cable |
| *For capacities over 100t please contact sales | | |

Dimensions (mm):

| RANGE (t) | A | B | C | ØD | E | WEIGHT kg |
|-----------|-----|-----|------|-----|-----|-----------|
| 0-1 | 137 | 105 | 41.5 | 30 | 193 | 1.5 |
| 0-2 | 137 | 105 | 41.5 | 30 | 193 | 1.5 |
| 0-5 | 137 | 105 | 41.5 | 30 | 193 | 1.5 |
| 0-12 | 149 | 105 | 41.5 | 38 | 239 | 2.0 |
| 0-25 | 160 | 125 | 55 | 53 | 284 | 4.5 |
| 0-35 | 175 | 138 | 55 | 60 | 335 | 5.5 |
| 0-50 | 198 | 150 | 75 | 73 | 375 | 10.0 |
| 0-100 | 275 | 220 | 120 | 100 | 500 | 28.0 |





APPLIED MEASUREMENTS LTD.

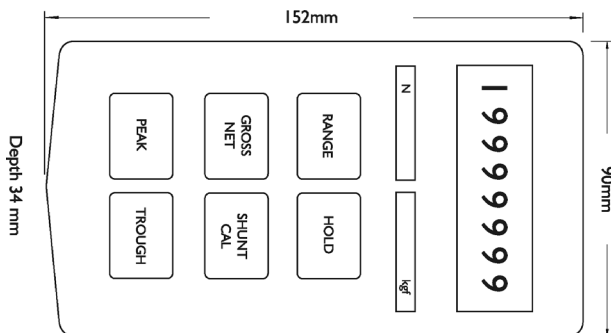
Transducer Specialists...

+44 (0) 118 981 7339

info@appmeas.co.uk

<https://appmeas.co.uk>

| CHARACTERISTICS | TR150 |
|--------------------------|---|
| Display | 7-digit LCD (± 9999999) 10.2mm high |
| Display Resolution | 1:250K @ 1Hz update, 1:65K @ 10Hz update |
| Accuracy | <0.005% of full scale |
| Thermal Drift | <25ppm/ $^{\circ}$ C |
| Operating Temperature | -10 to +50 $^{\circ}$ C |
| Integral Battery | 2xAA Alkaline (re-chargeable – optional) |
| Battery Life | 40 hours (with 350 ohm sensor) |
| Keypad | Tactile with rim embossed keys |
| Environmental Protection | IP65 |
| Relative Humidity | 95% non-condensing |
| Weight | 260 grams approx. |



Ordering Codes:

| Core Product | Capacity + Engineering Units | Cable Length (m) | Specials Code | Example Result |
|--------------|------------------------------|------------------|---------------|------------------|
| ETW | 1t | 015 | 000 | ETW-1t-015-000 |
| ETW | 2t | 015 | 000 | ETW-2t-015-000 |
| ETW | 5t | 015 | 000 | ETW-5t-015-000 |
| ETW | 12t | 015 | 000 | ETW-12t-015-000 |
| ETW | 25t | 015 | 000 | ETW-25t-015-000 |
| ETW | 35t | 015 | 000 | ETW-35t-015-000 |
| ETW | 50t | 015 | 000 | ETW-50t-015-000 |
| ETW | 100t | 015 | 000 | ETW-100t-015-000 |

Associated Products:



[ET24 Telemetry Lift Link Load Cell](#)