

Load Cell

MOUNTING ACCESSORIES

LOAD BUTTONS
ROD END BEARINGS
BALL-IN-CUP MOUNTS
PLATFORM MOUNTS



LOAD BUTTONS

- Stainless Steel Construction
- Eliminates Extraneous Forces

ROD END BEARINGS

- Durable Construction
- Ensures axial application of tensile force

BALL-IN-CUP MOUNT

- Rugged Construction
- Self Aligning to reduce Side Loads
- Flexible/Simple adaptor for Hopper Weighing Applications

PLATFORM MOUNT

- Stainless Steel Construction
- Self-Aligning for uneven floor mounting
- Easy installation within platform assembly
- Low Profile, maintaining low platform height

LOAD BUTTONS & ROD END BEARINGS

Our range of Load Buttons and Rod End Bearings are suitable for use with the DSCK, DSCC, DBCR, DBB, DBBSM, OSB & OBBS series of Load Cells. They are designed to align forces through the principle axis of the load cell thus reducing the effects of extraneous forces, hence offering improved performance from the cell. Load buttons are used where compressive forces are applied, while rod end bearings are used in the case of tensile force being applied.

BALL-IN-CUP MOUNT

The Ball-In-Cup mount is a useful addition to the OBBS series Load Cell. It provides a flexible joint to permit limited movement of a silo or hopper due to external factors, such as temperature variations causing thermal expansion. The arrangement is very straightforward to install, thus offering a cost effective solution, minimising commissioning down-time.

PLATFORM MOUNT

The Platform Mount has been specifically designed, for use with the OSB series Load Cell, in platforms, where a number of Load Cells are used together. The stainless steel construction with the inert neoprene rubber foot makes the assembly impervious to most industrial chemicals and ideal for harsh environments. They are supplied fitted to the required load cell direct from the factory.

Transducer Specialists...

APPLIED MEASUREMENTS LIMITED

3 MERCURY HOUSE - CALLEVA PARK - ALDERMASTON - BERKSHIRE - RG7 8PN - UK

Tel: (+44) 0118 981 7339 Fax: (+44) 0118 981 9121 email: info@appmeas.co.uk Internet: www.appmeas.co.uk



SPECIFICATION

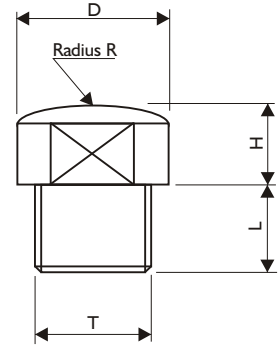
LOAD BUTTONS FOR COMPRESSION USE

All dimensions in mm

THREAD T	M8 x 1.25	M12 x 1.75	M16 x 2	M20 x 2.5	M24 x 2
D	15	22	32	33	26
H	5	6	10	14	14
L	10	12	16	26	26
R	150	150	180	200	200

THREAD T	M30 x 2	M36 x 2	M39 x 2	M45 x 3	M50 x 2	M64 x 4
D	50	60	50	70	75	118
H	20	25	20	40	40	50
L	40	40	55	60	60	65
R	200	200	200	300	300	400

Please contact sales if the thread you require is not shown

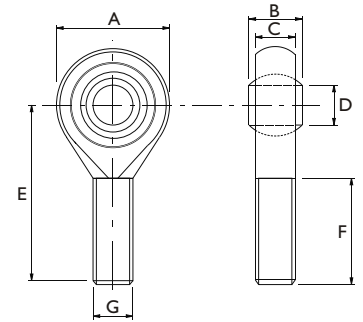


ROD END BEARINGS FOR TENSION USE

All dimensions in mm

THREAD G	M6 x 1	M8 x 1.25	M12 x 1.75	M16 x 2	M20 x 2.5	M24 x 2	M30 x 2	M45 x 3
A	18	22	34	42	50	60	73	112
B	-	-	16	21	25	31	19	35
C	-	-	12	15	18	22	22	30
D	6	8	12	16	20	25	30	50
E	36	42	54	66	78	94	110	185
F	-	-	32	39	46	55	65	107

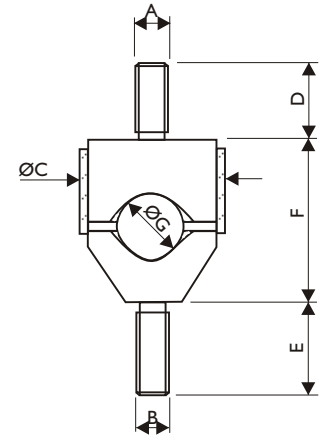
Please contact sales if the thread you require is not shown



BALL-IN-CUP MOUNT FOR OBBS SERIES LOAD CELLS

All dimensions in mm

MODEL RANGE	OBBS
A	M10 x 1.5
B	M8 x 1.25
C	33
D	25
E	40
F	41
G	19.0



PLATFORM MOUNT FOR OSB SERIES LOAD CELLS

All dimensions in mm

MODEL RANGE	OSBKT	OSBKT	OSBST	OSBKT & OSBKT
	500-1000kg	2000kg	500-2000kg	5000kg
A	157.4	157.4	157.4	202.4
B	52	58	54	77.5
C	22	22	22	29.5
D	43	43	43	57
E	80	80	80	100

