



APPLIED MEASUREMENTS LTD.

3 Mercury House, Calleva Park, Aldermaston, Berkshire, RG7 8PN

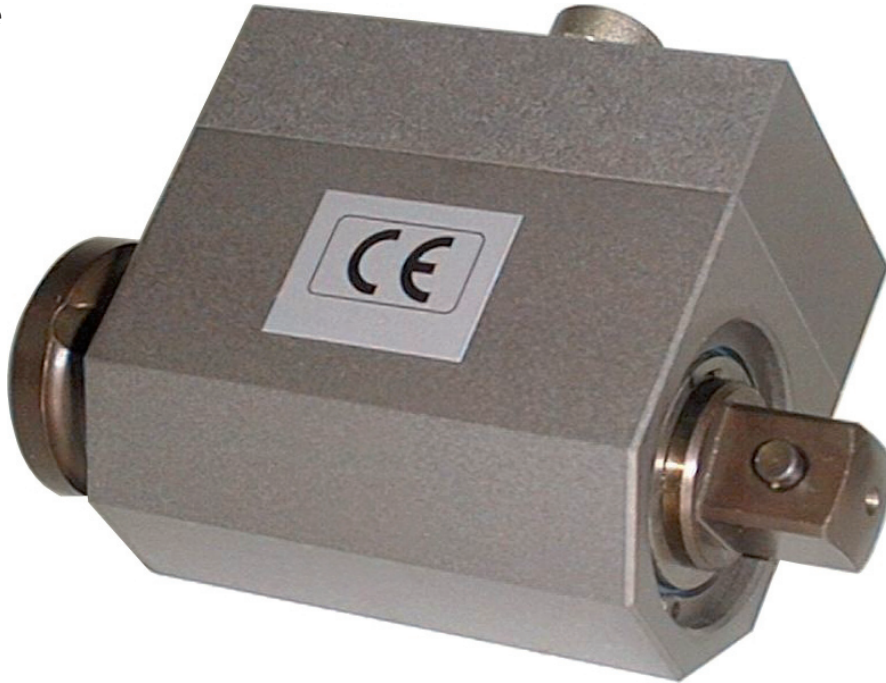
Tel: +44 (0) 1189 817339 | Web: www.appmeas.co.uk

Fax: +44 (0) 1189 819121 | Email: info@appmeas.co.uk

Torque Transducer

Typ DRFN

with square drive



**for automobile manufacturing, test bench and assembly applications,
suitable for pulsed tools**

It distinguishes with the following special features:

- No service needed because of contactless data acquisition
- High interference rejection because of amplified active signal
- Frequency modulation and strain gage principle cause high accuracy
- Ordinary power supply
- optional angle detection

Technical Specifications:

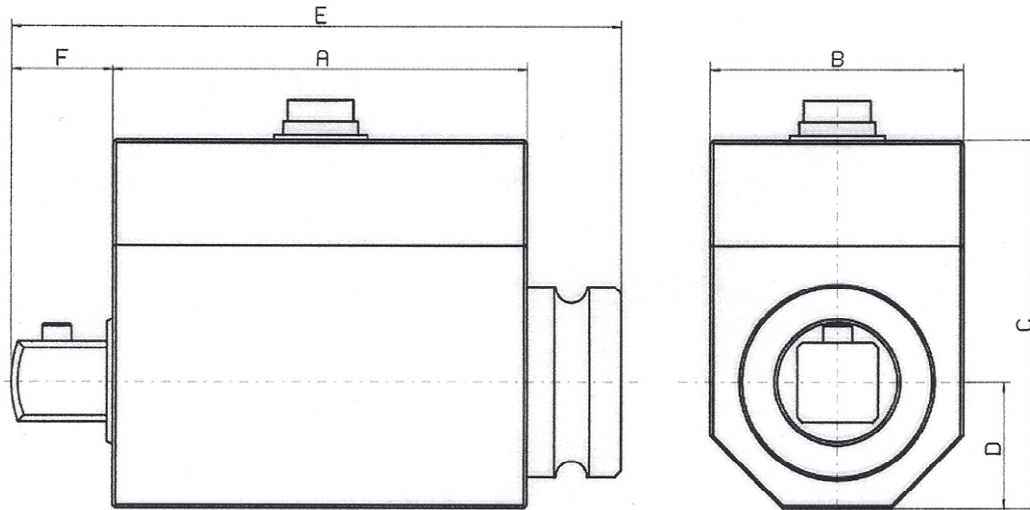
Supply Voltage:	12V DC +-10%
Current Consumption:	< 200mA
Rise Time 10-90%:	1ms (1kHz)
Voltage Output:	0-±5V
Internal Resistance:	100 Ω
Ripple:	< 100mVss
Nonlinearity:	< 0,15%
Hysteresis:	< 0,1%
Operating Temperature:	0-60°C
Compensated Temperature Range:	5-45°C
Temperature fault	
Zero Point	0,02%/K
Sensitivity:	0,01%/K
Connection:	12 Pin Fitted Connector

Angle	option(w)
rev. max.:	3 000 rpm
Output:	open collector
internal pull up:	10kΩ (5V level)
external pull up:	24V max
I max:	20mA
Pulses/rev.:	360
Resolution:	1°

Direction detection:

90° phase shift
Ch. A preceding at right spin of propulsion side

Mechanical Dimensions:



Inner- and outer square DIN 3121 (ISO- Norm 1174 : 1975)

Type [Zoll]	n_{max} [rpm]	Measurement range [Nm]	Overload [%]	A [mm]	B [mm]	C [mm]	D [mm]	E [mm]	F [mm]	Weight approx. [g]
1/4"	12.000	1 / 2 / 5 / 10 / 12 15 20	100 70 30	62	32	56	16	77	8	300
3/8"	12.000	20 / 30 / 50 63	100 80	62	24	52	16	82	12	350
1/2"	12.000	100 160 200	100 60 30	66	40	57	20	95	16	480
3/4"	12.000	200 / 300 500	100 50	66	46	65	23	110	24	800
1"	12.000	1.000 2.000	50 30	66	52	71	23	127	31	1.250
1 1/2"	7.000	2.000 / 3.000 4.000 / 5.000	100 50	86	92	108	46	178	44	4.800
1/4"-w	12.000	0,5 / 1 / 2 / 5 10 12 15 / 20	100 80 50 30	66	32	51	16	82	9	250
3/8"-w	12.000	20 / 30 / 50 63	100 80	66	40	59	20	90	12	400
1/2"-w	12.000	100 160 200	100 60 30	66	40	59	20	97	16	480
3/4"-w	11.500	200 / 300 500	100 50	71	55	74	27,5	117	24	1.050
1"-w	11.500	1.000	50	72	56	73	28	132	30,5	1.250
1 1/2"-w	7.000	2.000 / 3.000 4.000 / 5.000	100 50	86	92	108	46	178	44	4.800

1. Ordering Example: DRFN 1000 1"-w

Torque-transducer (standard square) measuring range 1000 Nm with angle detection

available Accessories: Measuring cable, Supply and Display Units

2. Ordering Example: DRFN 1000- 1"-A

Torque-transducer (standard square) measuring range 1000 Nm

Caution: For use with evaluation devices GMV1; GM1002; GM1003 order without Index „A“!



APPLIED MEASUREMENTS LTD.

3 Mercury House, Calleva Park, Aldermaston, Berkshire, RG7 8PN

Tel: +44 (0) 1189 817339 | Web: www.appmeas.co.uk

Fax: +44 (0) 1189 819121 | Email: info@appmeas.co.uk

Technical changes reserved