

Static/Reaction Square Drive Mounting TORQUE SENSOR

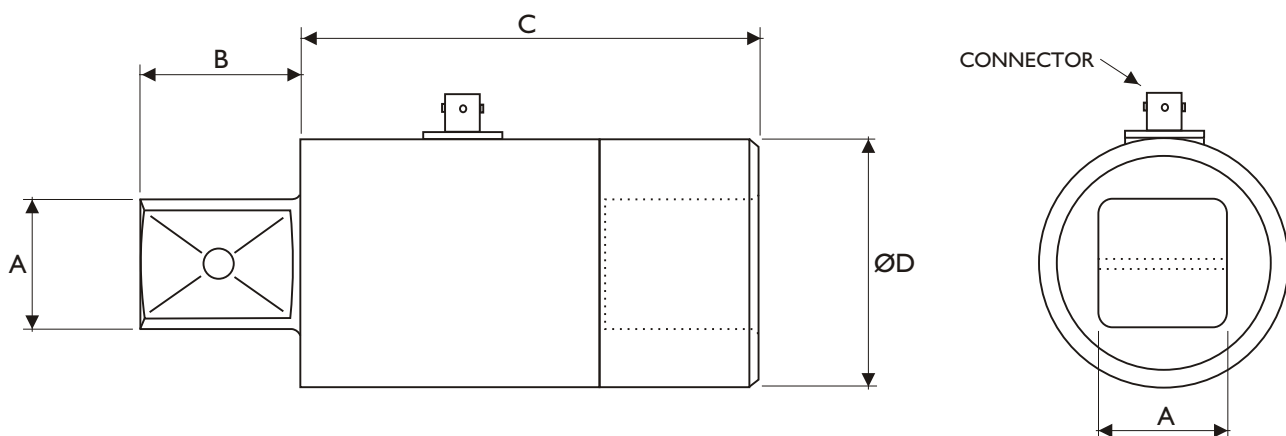
DTD-S Series

DESCRIPTION

The DTD-S series of Static/Reaction Torque Sensors have been designed specifically for the measurement of direct torque, and is particularly suited for use in calibrating or testing Torque Tools in a QA environment. All ranges are constructed from stainless steel and are environmentally protected to IP65.

The sensor is provided with an integral, robust bayonet lock military connector for quick and easy connection purposes.

Other styles and ranges are available and can be designed specifically to meet a particular applications requirement (please consult our Applications Department).



| RANGE (Nm) | Square Drive A | B | C | ØD |
|------------|----------------|------|-----|-----|
| 10 | 0.250 inch | 7.5 | 48 | 25 |
| 20 | 0.250 inch | 7.5 | 48 | 25 |
| 50 | 0.375 inch | 11.5 | 58 | 35 |
| 100 | 0.500 inch | 15.5 | 58 | 35 |
| 500 | 0.750 inch | 23 | 79 | 54 |
| 1000 | 1.000 inch | 28 | 79 | 54 |
| 2000 | 1.500 inch | 38 | 95 | 70 |
| 5000 | 2.000 inch | 45 | 130 | 90 |
| 10,000 | 2.500 inch | 55 | 165 | 110 |
| 20,000 | 3.000 inch | 68 | 212 | 130 |
| 50,000 | 3.500 inch | 79 | 185 | 180 |

| CHARACTERISTICS | | DTD-S | UNITS |
|----------------------------------|---------------------|---|-------------|
| Range: | | 10, 20, 50, 100, 500, 1000, 2000, 5000, 10000, 20000, 50000 | Nm |
| Excitation Voltage: | | 10 (15 Max.) | VDC or VAC |
| Sensitivity: | | 2 nominal, 1.5 on 50,000Nm | mV/V |
| Overload Protection: | | 150 | ±%FSO |
| Non-Linearity: | | <0.15 | ±%FSO |
| Repeatability: | | <0.15 | ±%FSO |
| Hysteresis: | | <0.15 | %FSO |
| Temperature Range | Operating: | -20 to +80 | °C |
| | Compensated: | +20 to +70 | °C |
| Temperature Effects | On Zero: | <0.010 | ±%FSO/°C |
| | On Output: | <0.010 | ±Reading/°C |
| Bridge Resistance: | | 700 nominal | ohms |
| Drive Size: | | See Dimension Table Above | |
| Environmental Protection: | | IP65 | |

Transducer Specialists...

APPLIED MEASUREMENTS LIMITED

3 MERCURY HOUSE - CALLEVA PARK - ALDERMASTON - BERKSHIRE - RG7 8PN - UK

Tel: (+44) 0118 981 7339 Fax: (+44) 0118 981 9121 email: info@appmeas.co.uk Internet: www.appmeas.co.uk

Issue 03/10

