

Flange & Shaft

TORQUE SENSOR

YDFS
Series



- Torque Ranges 10Nm to 5kNm
- 0.3% Accuracy Class
- Suitable for vertical applications
- Slip ring technology
- Flange/drive shaft connection
- 3 YEAR WARRANTY

Options Available

Customer-specific measuring ranges

Supplied With Any Instrumentation and Calibrated as a Complete System with Traceable Certificate

DESCRIPTION

The YDFS torque transducer is designed for continuously rotating applications and uses slip rings to transfer data. Particularly suitable for vertical application the YDFS has a flange coupling at one end and a keyed shaft at the other.

The YDFS series can be further complimented by any of our range of instrumentation to offer a complete system, supplied and calibrated from a single supplier.

Transducer Specialists...

APPLIED MEASUREMENTS LIMITED

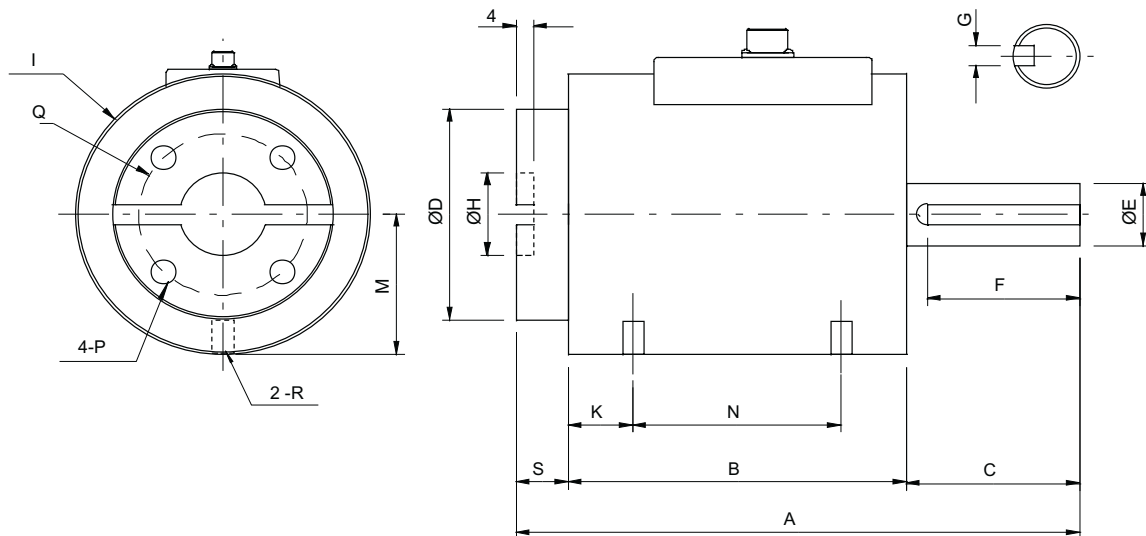
3 MERCURY HOUSE - CALLEVA PARK - ALDERMASTON - BERKSHIRE - RG7 8PN - UK

Tel: (+44) 0118 981 7339 Fax: (+44) 0118 981 9121 email: info@appmeas.co.uk Internet: www.appmeas.co.uk



SPECIFICATION

CHARACTERISTICS	YDFS	UNITS
Torque Ranges:	10 - 5000	Nm
Rated Output (FSO):	1.5	mV/V
Excitation Voltage:	10	VDC
Safe Overload:	150	% FSO
Non-Linearity:	0.3	±% FSO
Repeatability:	0.3	±% FSO
Hysteresis:	0.3	±% FSO
Temperature Range Operating:	-20 to +70	°C
Compensated:	-10 to +60	°C
Temperature Effect on Zero:	0.009	±%FSO/°C
Temperature Effect on Output:	0.009	±%FSO/°C
Terminal Resistance (Input/Output):	350±3	ohms
Insulation Resistance:	300	megohms
Environmental Protection:	IP50	
Cable	3 screened, Ø7mm	



CAPACITY	A	B	C	ØD	ØE	F	G	M	N	O	ØH	ØI	K	ØP	Q	S	R	RPM
10-20Nm	130	78	40	51	15	35	5x5	33.6	48	8	20	68	15	4-M6x15DP	39	12	M5x8DP	5.000
50 100 200Nm	157	95	50	65	22	42	5x5	39.0	55	8	38	81	20	4-M6x15DP	56	12	M5x8DP	4.000
500Nm	170	97	60	76	32	50	10x8	42.8	57	10	48	88	20	4-M6x15DP	60	13	M5x8DP	3.000
1kNm	189	96	80	86	42	65	12x8	49.0	56	16	52	100	20	4-M6x15DP	68	13	M5x8DP	3.000
3kNm	207	105	90	102	58	75	16x10	58.0	65	16	60	120	20	4-M6x15DP	85	13	M5x8DP	2.000
5kNm	223	105	100	107	73	85	20x12	62.0	65	20	70	128	20	4-M6x15DP	107	18	M5x8DP	2.000

